

McKinney Quilters Guild
2022 Block of the Month

This program has twelve blocks, one for each month of the year. Each block will measure 8 ½" unfinished (8" finished). You choose the color palette and however complex you want to make the squares (plain, scrappy, embellished). The twelve blocks can be sewn together to make a calendar quilt.

January: Snowflake



Fabric needed: snowflake and background.
Make 16 Half Square Triangles (HST) 2 ½" unfinished.
Lay out the HST as shown and sew the rows together.
Your completed block should measure 8 ½" square.

February: Heart



Fabric needed: background and heart.
Background: ten 2 1/2" squares: two white for bottom corners and eight red & white HST.
Heart: fourteen 2 ½" square: 6 center squares; eight HST
Lay out the squares as shown and sew the rows together.

March: Shamrock



Fabric needed: background and clover.
Clover: twelve 2 ½" squares: snowball* one corner of 9 clover squares
Stem: strip 1-1/2" x 7"
Background: 5" square cut diagonally (corner to corner)
Sew the stem strip along the diagonal cut of the background square.
Trim the "stem" block to 4-1/2" square with the stem centered.
Lay out the finished squares shown and sew the rows together.

April: Umbrella



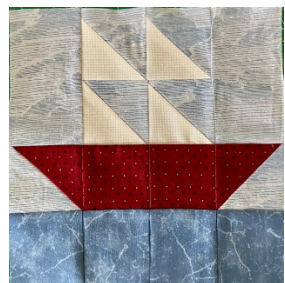
Fabric needed: background, handle, umbrella stripes (2-4)
Umbrella: Four stripes 1 ½ "x 8 ½". Sew together.
Background:
Two 2 ½" squares to use for top corner snowballs on stripes;
one 3 ½" x 4 ½" for left of handle; one 4 X 4 ½" for right of handle;
one 1" square (inset of handle); one 1 ½" x 3 ½" lower left of block
Handle: one 1" x 4 ½" handle pole; one 1 x 1 ½" bottom of handle;
one 1" square to finish handle.
Sew pieces together as shown

May: Flower



Fabric needed: background, tulip, leaves & stem.
Background: four 2 ½" squares for HST; six 1 ½" squares for snowballs
Tulip: cut twelve 2 ½" squares: Four for HST for top of tulip and six for center.
Snowball two squares for bottom right & left of tulip.
Leaves & stem: Two 2 ½" squares snowball with 1 ½" square for outer leaves. Two 2" squares, snowball with 1 ½" squares for inner leaves next to stem. One 1 ½" x 2 ½" for stem.
Sew pieces together as shown

June: Sailboat



Fabric needed: background, sails, water, & boat
Background: two 2 ½" x 4 ½" rectangles
six 2 ½" squares for HST: 4 for sails; 2 for boat.
Sails: four 2 ½ squares and make HST with background.
Boat: four 2 ½" squares: two 2 ½" squares for center of boat & two HST with background fabric.
Water: Cut four 2 ½" for water
Sew pieces together as shown

July: Patriotic Star



Fabric needed: background and red or blue fabric for star.
Background: Twelve 2 ½" squares: four 2 ½" corners and eight HST
Star: twelve 2 ½" square: four for red/white/blue center and eight HST
Sew pieces together as shown

August: Sunflower



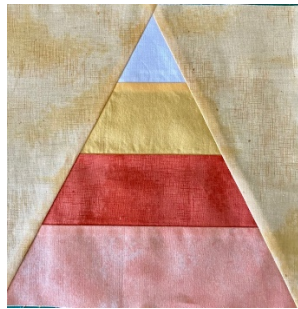
Fabric needed: background, petals, leaves, and center
Background: twelve 2 ½" squares to make HST with petals & leaves
Petals: eight 2 ½" squares to make petal HST
four 1" squares to snowball center
Center: four 2 ½" squares for center
Leaves: four 2 ½" square to make leaf HST

September: Apple



Fabric needed: background, apple, stem, leaf
Background: eight $2\frac{1}{2}$ " squares: one corner square
one with stem and 2 HST with leaf
four $1\frac{1}{2}$ " x $2\frac{1}{2}$ " rectangles for apple corners
Stem: one $1\frac{1}{2}$ " x $2\frac{1}{2}$ "
Leaf: two $2\frac{1}{2}$ " HST with background
Apple: $2\frac{1}{2}$ " x $2\frac{1}{2}$ " twelve rectangles: eight for inner apple
four HST corners

October: Candy Corn



Fabric needed: background, 3 oranges for candy corn, one white for top of candy corn.
Background: one $8\frac{1}{2}$ " x $8\frac{1}{2}$ " square cut diagonally
Candy corn: three different color strips and one white $2\frac{1}{2}$ " x $8\frac{1}{2}$ "
Sew strips together. Use a 60-degree triangle ruler & cut triangle shape.
Sew diagonal cut background shapes to each side of the candy corn.
Alternative block: Pumpkin. Use September's Apple and replace the red with orange fabric. Delete the leaf and wa-la you have a pumpkin block.

November: Colored Leaf



Fabric needed: background, fall colors for leaf, stem.
Background: six $2\frac{1}{2}$ " squares: one corner square, four for HST and one cut diagonally for the stem.
Leaf: seven $2\frac{1}{2}$ " squares: three $2\frac{1}{2}$ " and four for HST
Stem: Cut a strip $1\frac{1}{2}$ " x 7 ". Sew the strip along the diagonal cut of the background square. This will be the stem of the leaf.
Sew squares together. Border the block to make an $8\frac{1}{2}$ " block.

December: Christmas Tree



Fabric needed: background, green tree, and brown or black tree trunk
Background: four $2\frac{1}{2}$ " squares, six $2\frac{1}{2}$ " squares for HST with green, two $2\frac{1}{2}$ " x $2\frac{1}{2}$ " squares for tree trunk.
Green Tree: Use six $2\frac{1}{2}$ " squares for HST with background and four $2\frac{1}{2}$ " squares for inside tree.
Brown or Black Tree Trunk: $1\frac{1}{2}$ " x $2\frac{1}{2}$ " rectangle
Lay out finished square to form the tree as shown and sew.

