

Fun! Fun! Fun! Quick & Easy Pillowcase

These instructions are for one standard size pillow (approximately 32" x 20")

Fabric Requirement:

Main fabric (body) of pillowcase - 3/4 yard

Cuff of pillowcase - 1/4 yard

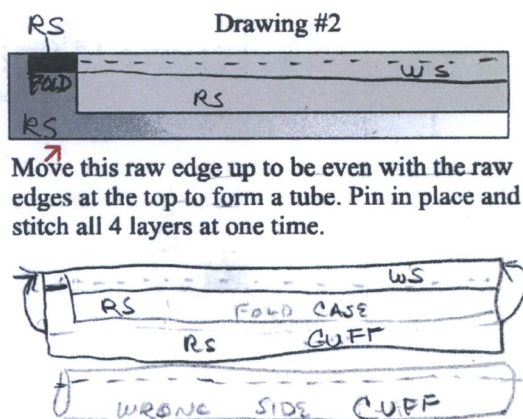
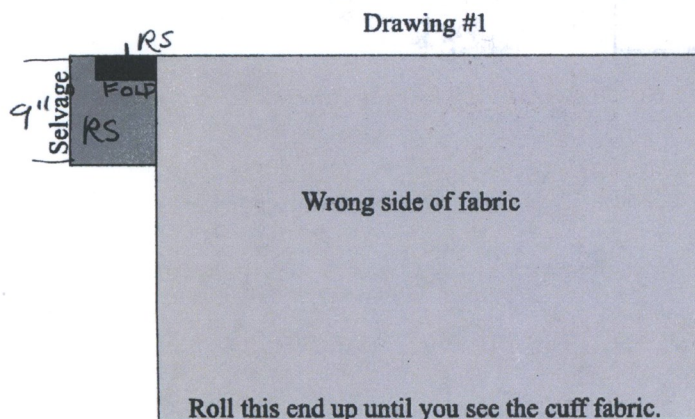
Accent strip - 1/8 yard

Instructions:

1. Trim the 1/8 yard of fabric to 2" width. Fold the accent in half lengthwise, wrong sides together and press.
2. Trim to even the long edges of the cuff. Lay the cuff fabric right side up with selvages going down the side. Place accent strip on cuff with raw edges even on upper long side. (See Drawing #1)
Lay the main fabric right side down and line up the raw edges along the top. (Drawing #1)
3. From the opposite end, (or bottom) roll the edges of the main fabric until the cuff shows. (Drawing #2)
4. Bring up the bottom cuff raw edge, aligning with the top edges and enclosing rolled up main fabric. Pin in place. This will form a tube.
5. Stitch across the pinned seam.
6. Reach inside the tube and pull out the main fabric. Press. Trim excess fabric along side.

For beautifully finished seams:

7. Turn **right** side out and stitch a scant 1/4" seam across bottom (opposite cuff) and down the side.
8. Turn **wrong** side out and stitch a 1/2" seam along bottom and side.



Happiness Is...Quilting! 211 N. Kentucky St. McKinney, TX 75069 (972) 542-8839
www.happinessisquilting.com